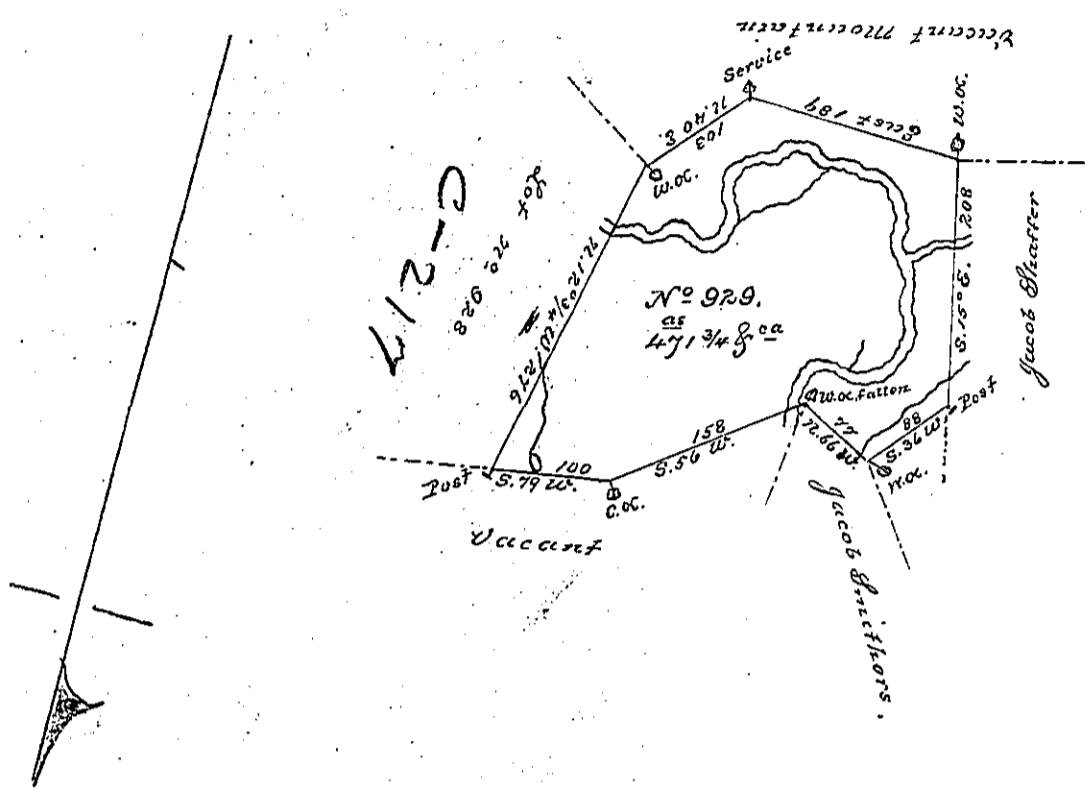


W



Draft of a tract of land, Called *Situate on Nescopeck*
 Creek below & adjoining *Lot* No. 928 in Luzerne County containing four
 Hundred & seventy one acres $\frac{3}{4}$ & allowance of Six per cent for roads &c.
 Surveyed for the Ministers, trustees, elders and deacons, of the German
 Reformed congregation of the City of Philadelphia the 2^d day of June 1790 by
 Virtue of an act of Assembly Passed the 23^d Day of Sept: 1789 & in Pursuance
 of a warrant to me directed Dated the 18th Day of March 1790 No. 929.
 by Wm. Gray D.S.

To Daniel Boodhead Esq. }
 Sur: Gen. }

IN TESTIMONY that the above is a copy of the original remaining on file in the
 Department of Internal Affairs of Pennsylvania, made con-
 formably to an Act of Assembly approved the 16th day of
 February, 1833, I have hereunto set my Hand and caused
 the Seal of said Department to be affixed at Harrisburg, this

Ninth day of April 1891

Wm. J. Stewart
 Secretary of Internal Affairs